

eFive 25 Installation Guide



Contents

This short guide explains how to install the eFive 25 VPN server and to get started with the embedded configuration web site.

1. What is eFive 25 ?.....	3
2. Compliance.....	3
3. Hardware description.....	4
3.1 Package contents.....	4
3.2 Housing interfaces.....	4
3.2.1 Front Panel.....	4
3.2.2 Back panel.....	5
3.3 Markings.....	5
3.4 Mechanical outline.....	6
4. Software configuration.....	7
4.1 Factory default IP settings.....	7
4.2 Network interface configuration	7
4.2.1 Selecting the appropriate IP ranges.....	7
4.2.2 First connection.....	7
4.2.3 Setting the LAN IP (green) address.....	8
4.2.4 Setting the WAN (red) address	9
5. General specifications of eFive 25.....	10
Revision history.....	11

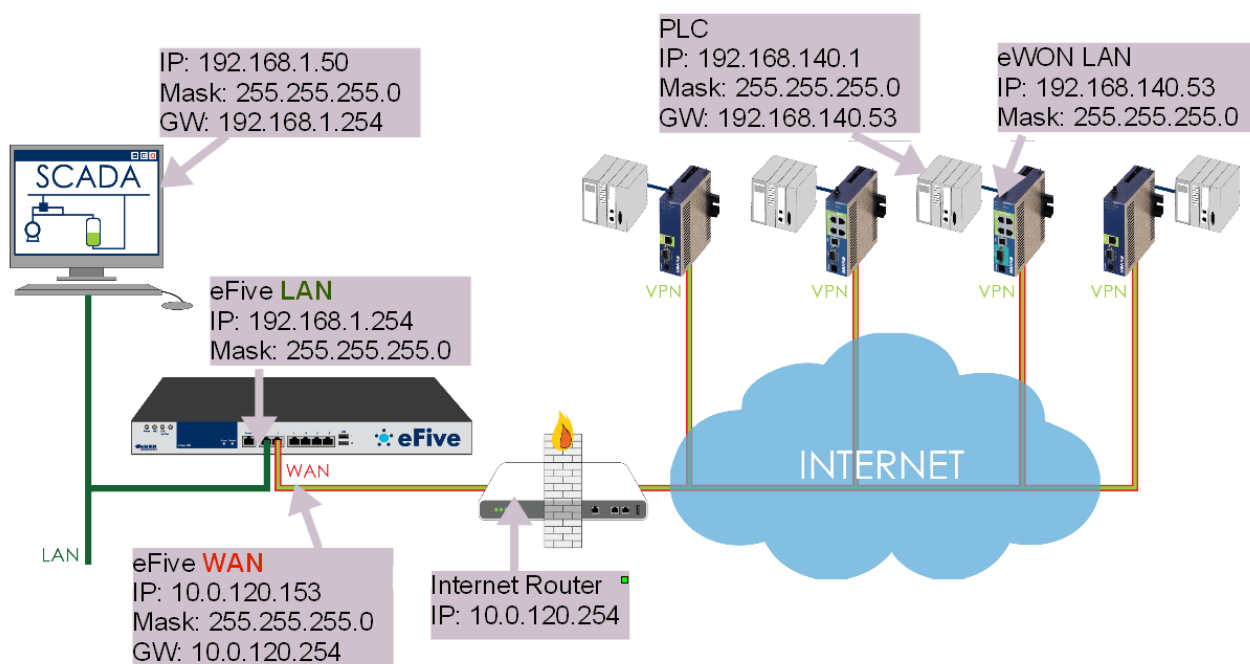
1. What is eFive 25 ?

This Installation Guide describes the hardware and software installation of the VPN server platform eFive 25.

eFive 25 is a compact fanless hardware platform featuring a Virtual Private Network (VPN) gateway with OpenVPN. It has been designed to be a perfect match with the eWON range to build a VPN network. The eFive 25 acts as OpenVPN Server and the eWONs as OpenVPN Clients.

The model eFive 25 is designed to support up to 25 VPN clients. For larger configurations there is the eFive 100 (see IG-013-0-EN).

The objective is to connect for example a SCADA PC to the PLC devices behind the eWON. The SCADA PC makes part of the LAN network of the eFive and has the eFive as default Gateway. When the VPN connection is established between the eWON and the eFive, the eFive routes the requests from the SCADA to the network behind the eWON. An example of typical IP address configuration is given in the picture below. The System and VPN configuration to reach this objective are described in the user guide AUG-050-0-EN (eFive system and VPN configuration). This guide is available on the eWON support site <http://wiki.ewon.biz/efive>.



2. Compliance

The current versions of product certificates for the eFive are available from our Support site: http://wiki.ewon.biz/Support/07_Documentations/Official_documents

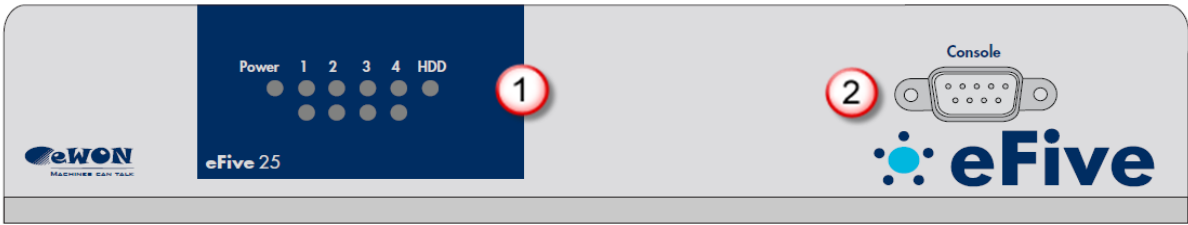
3. Hardware description

3.1 Package contents

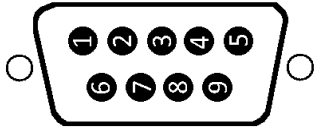
1	The eFive 25 VPN server hardware platform x 1
2	DC power adapter 12V 5A x 1
3	Plastic adhesive stands x 4 (<i>small adhesive stands to affix on the bottom of the unit</i>)
4	Quick start guide

3.2 Housing interfaces

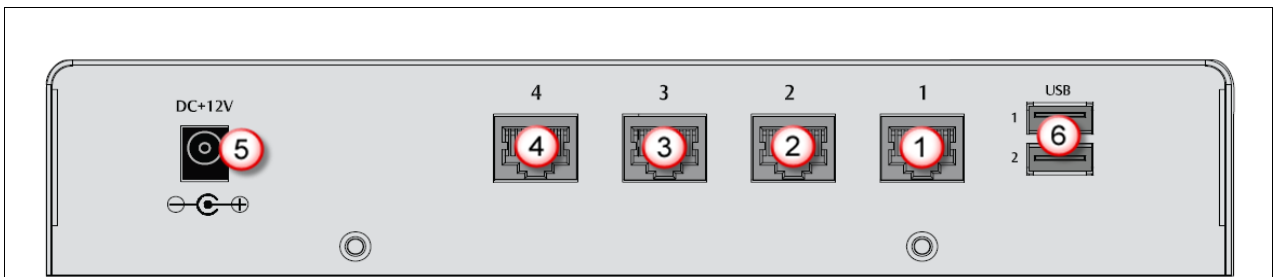
3.2.1 Front Panel



1	LED panel														
	<ul style="list-style-type: none"> Power LED – ON when the appliance is ON. 1 to 4 LED pairs – Activity on Network ports 1 to 4 <table border="0"> <tr> <td style="padding-right: 20px;">Top LED</td> <td>Transfer rate indication (double color)</td> </tr> <tr> <td>OFF</td> <td>10Mbps</td> </tr> <tr> <td>GREEN</td> <td>100Mbps</td> </tr> <tr> <td>AMBER</td> <td>1000Mbps</td> </tr> <tr> <td>Bottom LED</td> <td>Activity LED (orange single color)</td> </tr> <tr> <td>OFF</td> <td>No connection (or appliance OFF)</td> </tr> <tr> <td>ORANGE flashing</td> <td>Activity</td> </tr> </table> <ul style="list-style-type: none"> HDD LED – ON when reading/writing on the solid state drive (SSD) 		Top LED	Transfer rate indication (double color)	OFF	10Mbps	GREEN	100Mbps	AMBER	1000Mbps	Bottom LED	Activity LED (orange single color)	OFF	No connection (or appliance OFF)	ORANGE flashing
Top LED	Transfer rate indication (double color)														
OFF	10Mbps														
GREEN	100Mbps														
AMBER	1000Mbps														
Bottom LED	Activity LED (orange single color)														
OFF	No connection (or appliance OFF)														
ORANGE flashing	Activity														
2	Serial port for RS-232 Console Interface for SSH access and reset to factory settings.														
	Pin #	RS232													
	1	-													
	2	RXD													
	3	TXD													
	4	-													
	5	GND													
	6	-													
	7	RTS													
	8	CTS													
	9	-													



3.2.2 Back panel



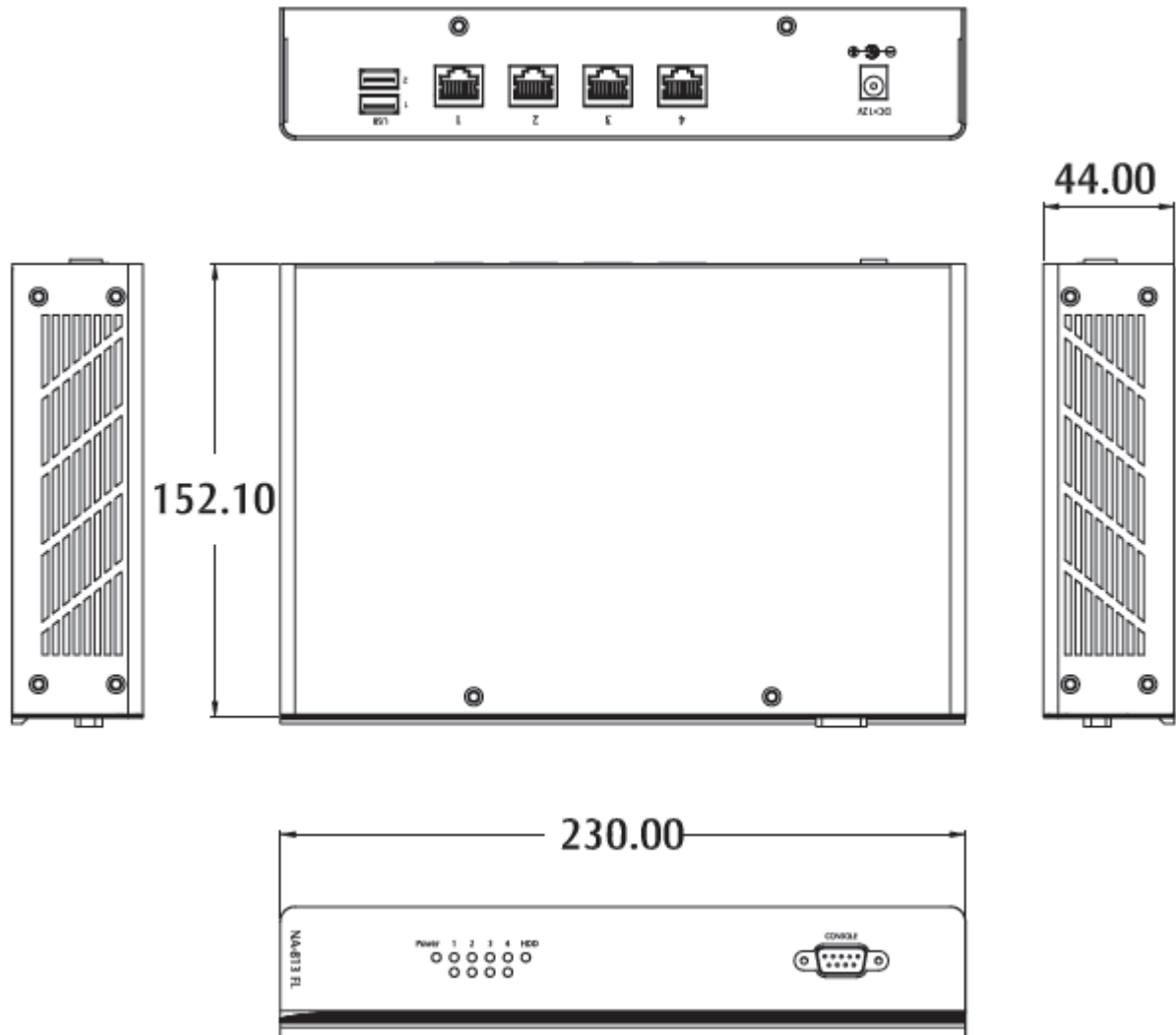
1	Ethernet Port 1 - LAN (green)	Left side LED - Activity LED (orange single color) OFF = No connection (or appliance OFF)
2	Ethernet Port 2 - WAN (red)	ORANGE flashing = Activity
3	Ethernet Port 3 - DMZ (orange)	Right side LED - Transfer rate indication (double color)
4	Ethernet Port 4 – WLAN (Blue)	OFF 10Mbps GREEN 100Mbps AMBER 1000Mbps
5	12V/5A power input	
6	USB Ports (2) for mouse/keyboard connection	

3.3 Markings

The identification label of the eFive 25 is placed on the bottom plate of the housing. The different parts of the label are shown below:

	1	Device type
	2	Serial number 1237 = year+week 0314 = sequential number 04 = product code
	3	Commercial part number
	4	Hardware version

3.4 Mechanical outline



All dimensions are in millimeters.

4. Software configuration

4.1 Factory default IP settings

Default LAN IP address (on Port 1)	10.0.0.153
Corresponding Subnet Mask	255.255.255.0

4.2 Network interface configuration

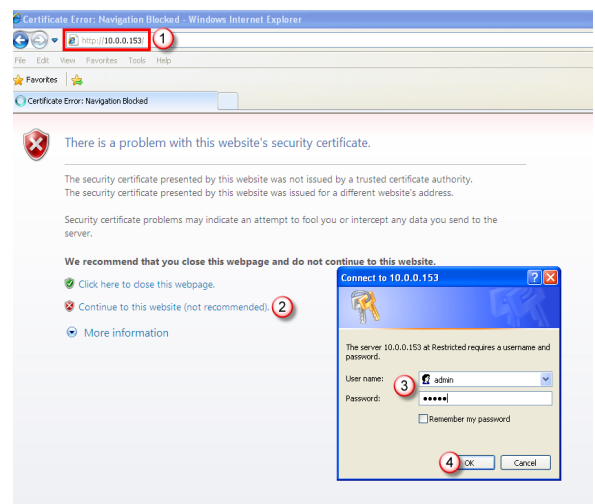
4.2.1 Selecting the appropriate IP ranges

Configuring the VPN server is simple. However, you need to pay attention to the different IP ranges of the involved networks. The IP range of the LAN-side needs to be different than the one on the WAN-side. Check with the network administrator whether the planned WAN range is compliant with the current IT-policy. For more information about the different networks used by the eFive, please see the eFive User Guide, AUG-050-0-EN which is available from the eWON Support website <http://wiki.ewon.biz/efive>.

4.2.2 First connection

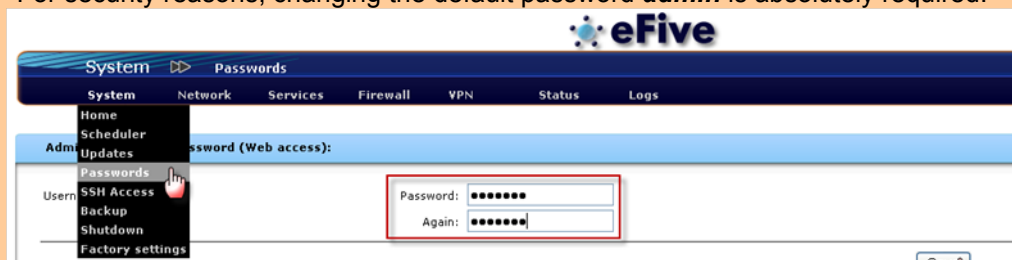
Connect your PC with the LAN-port of your eFive (Port 1 - green). Make sure that your PC is having an IP address that is compatible with the default LAN IP address of the eFive. Open your browser and type the default address 10.0.0.153 in the URL field. Hit Enter. You can discard the security warning as shown. The eFive redirects this address to <https://10.0.0.153:8443/>

Enter the default username and password.
 Default username: admin
 Default password: admin



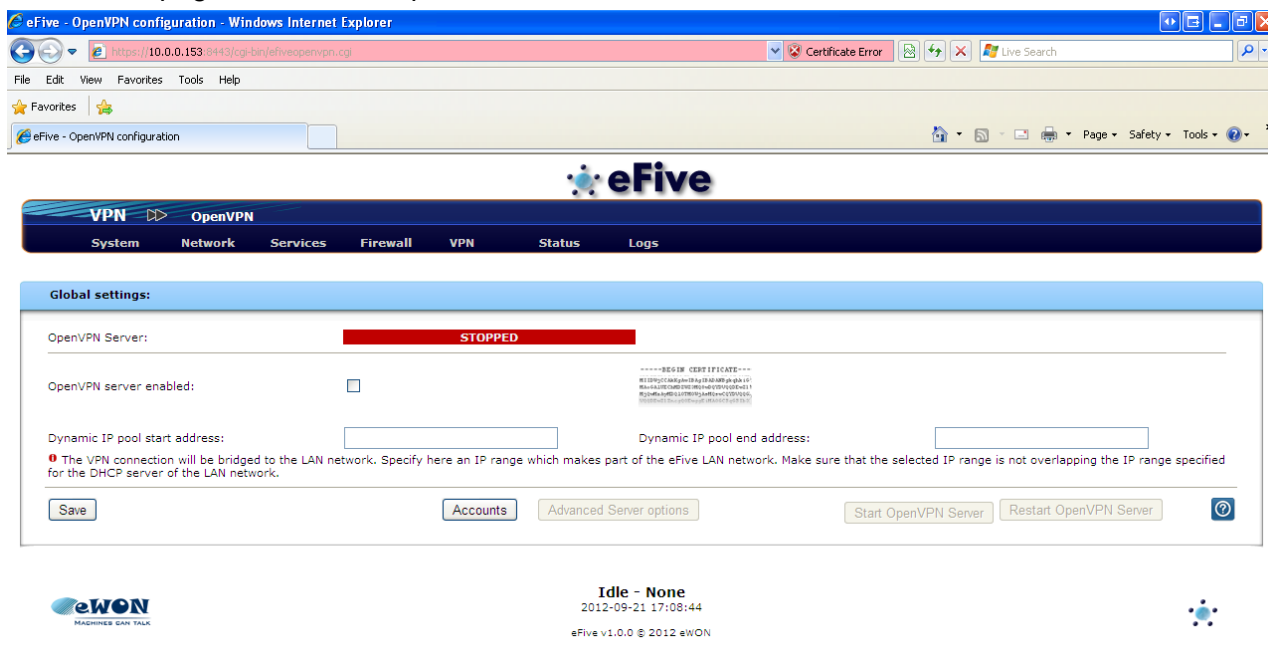
Warning!

For security reasons, changing the default password **admin** is absolutely required.



To change the **admin** password, from the menu bar, click on **System, Passwords**. Enter the new password twice and click **Save**.

The home page of the eFive opens.

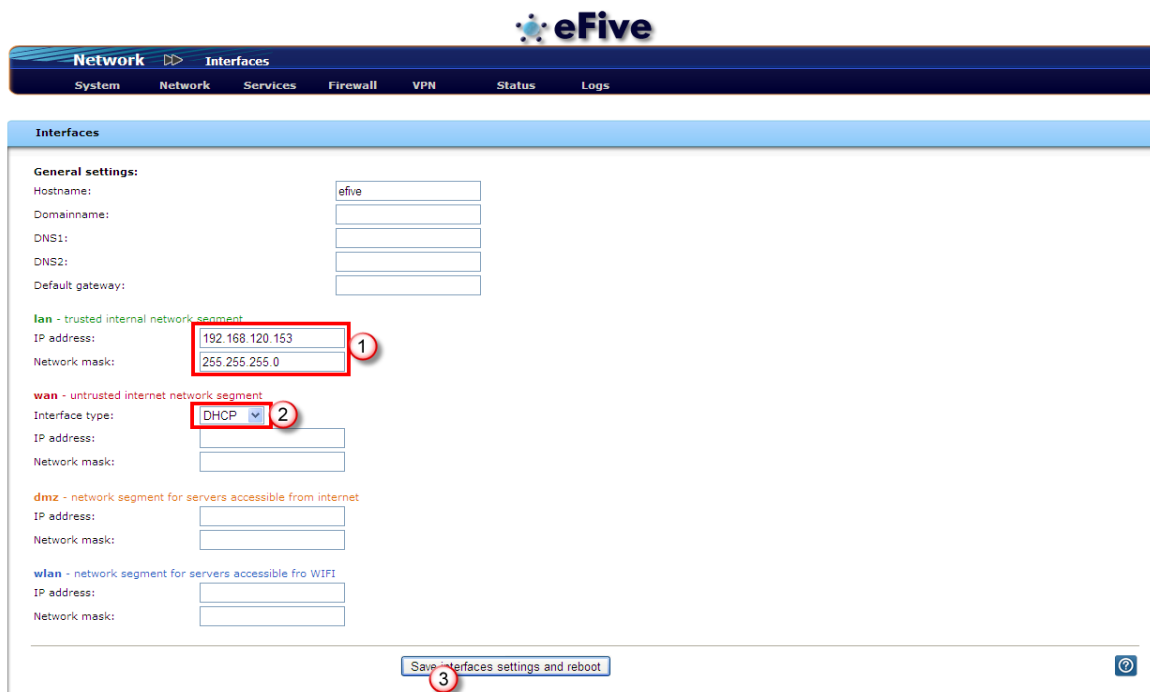


4.2.3 Setting the LAN IP (green) address

Click **Network, Interfaces** from the main menu.



The interfaces window opens.



In the LAN section, replace the default address and Network mask by the one you want to use.

4.2.4 Setting the WAN (red) address

There are no default settings on the WAN side. Depending on the requirements, you can configure the WAN port to acquire a dynamic address automatically (DHCP enabled) or with a fixed IP address and network mask. The WAN/DMZ and VPN configuration are described in the software document AUG-050-0-EN (eFive – Client configuration & device access).

5. General specifications of eFive 25

Mechanical/Power/Environmental	
Form factor	Compact fanless appliance
Dimensions	44mm (1.73") (H) x 230mm (9.05") (W) x 152.1mm (5.98") (D)
Weight	2.5kg (5.51 lb)
Power supply	AC/DC power adapter, Input 100-240VAC 1A typ. 2A max. Output 12V 5A
Operation temperature	0°C ~ 40°C (32°F ~ 104°F)
Storage temperature	-20°C ~ 70°C (-4°F ~ 158°F)
Relative Humidity	0 to 95% non condensing
Interfaces	
Ethernet interfaces	4 x 10/100/1000Mbps Ethernet ports on RJ45
Serial interface	1 x RS232 Serial-port on DB9 for console connection
USB interfaces	2 x USB ports

NOTE: All specifications and images are subject to change without notice.

Revision history

Revision Level	Date	Description
1.0	10/01/12	Initial release

i

Document build number: 50

Note concerning the warranty and the rights of ownership:

The information contained in this document is subject to modification without notice. The vendor and the authors of this manual are not liable for the errors it may contain, nor for their eventual consequences.

No liability or warranty, explicit or implicit, is made concerning quality, the accuracy and the correctness of the information contained in this document. In no case the manufacturer's responsibility could be called for direct, indirect, accidental or other damage occurring from any defect of the product or errors coming from this document.

The product names are mentioned in this manual for information purposes only. The trade marks and the product names or marks contained in this document are the property of their respective owners.

This document contains materials protected by the International Copyright Laws. All reproduction rights are reserved. No part of this handbook can be reproduced, transmitted or copied in any way without written consent from the manufacturer and/or the authors of this handbook

eWON sa, Member of ACT'L Group.